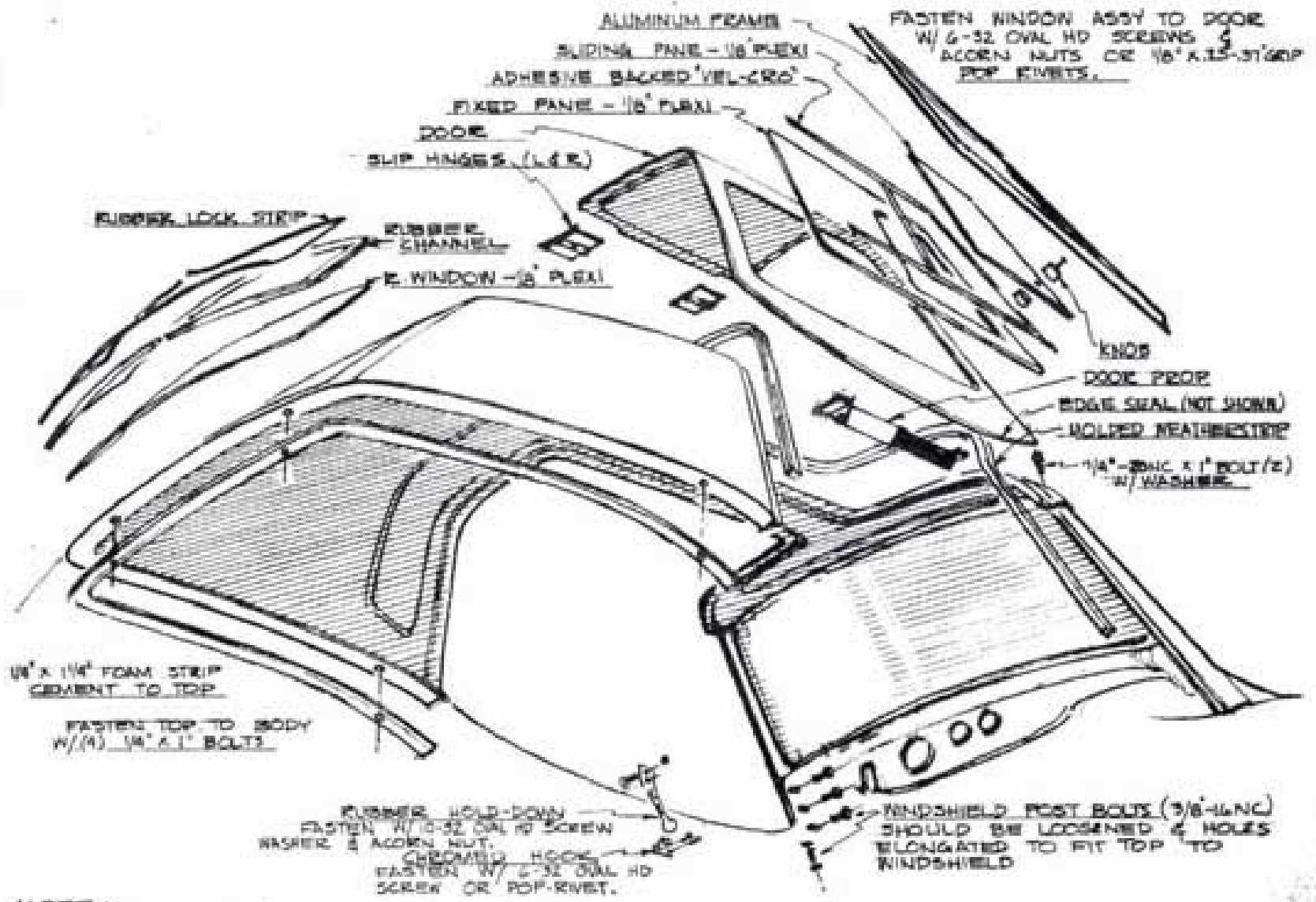


# DESERTER<sup>®</sup> *GT* by DEARBORN

## HARDTOP INSTRUCTIONS (GULLWING)

AUTODYNAMICS CORPORATION  
2 BARNARD STREET  
MARBLEHEAD, MASS., 01945  
AREA CODE 617 - 631-8500

FORM A7007



**NOTE:**  
 WASH TOP W/ SOAP & WATER TO REMOVE  
 MOLD RELEASE AGENT.

GT HARDTOP SHEET 1  
 AUTODYNAMICS CORPORATION

NOTCHES REQUIRED  
FOR HINGE CLEARANCE  
IF DOOR REMOVAL  
CAPABILITY IS DESIRED

DOOR REMOVES

DOOR EDGE TO BRACKET HOLE

HINGE & TO DOOR PROP  
CROTT 4.

NOTCH WEATHER STRIP  
UNDER HINGES & OVER  
BRACKET

IF DOORS ARE TO  
BE REMOVED OFTEN,  
REPLACE PIN IN  
DOOR PROP MTS  
BRACKET WITH  
FLATHEAD SCREW.

TOP FIT MAY REQUIRE  
BANDING. ANGULAR  
DIFFERENCE IN TOP  
& WINDSHIELD ALLOWS  
CONTOUR CHANGE BY  
BANDING TO ACHIEVE  
FIT TO WINDSHIELD.

3/8 X 3/4 FOAM STRIP -  
CEMENT TO TOP

APPLY ALL WEATHER-  
STRIP W/ SUPERWEATHER STRIP  
ADHESIVE.

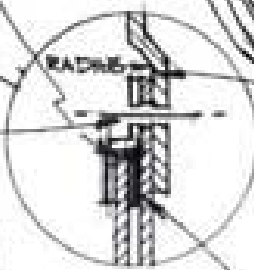
LIP MAY NEED NOTCHING.

BEVEL THIS EDGE

SWING DOOR TO VERTICAL -  
COCK PROP IN EXTENDED  
POSITION & MARK HOLES.  
DRILL 1/4" - 2" SINK MTS BKT  
FOR 1/4"-20 X 1/2" FLAT-HEAD  
SCREWS.

AFTER FRONT EDGE IS  
FITTED, DRILL TOP & SPOT  
WINDSHIELD POST. SLIP TOP  
BACK & DRILL & TAP POST  
FOR 1/4"-20 X 1/2" BOLT.

**CAUTION**  
BE SURE  
FASTENER HAS  
CLEARANCE IN FLANGE  
TO AVOID BREAK-OUT  
AT EDGE IF DOOR  
FLANGES IN UP POSITION.  
HOLES SHOULD  
BE CHAMFERED.



**CAUTION** - BE SURE WINDOW ASSEMBLY  
BEARS ON FLAT SURFACE BEFORE  
SECURING TO AVOID DISTORTION,  
DOOR SEALING, & STICKY SLIDES

VEL-CRO STRIP USE LIGHTER FLUID OR OTHER  
MINERAL SOLVENT TO SOFTEN ADHESIVE.  
STRETCH OUT WHEN APPLYING TO AVOID  
BUNCHING UP IN WET WEATHER

ST HARDTOP SHEET 2  
ALTDYNAMICS CORPORATION